



CRUISE OF 6 DAYS / 5 NIGHTS - REF. NSN_PP

The Loire Valley, a Royal legacy (port-to-port cruise)

NANTES - SAINT-NAZAIRE - NANTES - ANCENIS - CHALONNES-SUR-LOIRE - The Châteaux of the Loire Valley - ANCENIS - NANTES

Embark on a cruise on the Royal Loire River whose beauty is legendary. Visit Nantes and The Machines of the Isle of Nantes, a gallery that recreates the imaginary world of the famous writer Jules Verne. Discover Saint-Nazaire and admire its shipyard and the Escal'Atlantic which immerses you in the world of steamships from the beginnings of their gigantic construction to life on board. Soak up the magical castles of the Loire such as Brissac, the highest castle in France whose monumental facades rise up from its large landscaped park.



CRUISE HIGHLIGHTS

- **EXCLUSIVE TO CROISIEUROPE** the Loire from above(1-2)
- **Full-day excursion to the castles of the Loire Valley:** guided tours of the castles of Ussé, Azay-le-Rideau and the gardens of Villandry
- Wine-tasting in the cellars of the **Brissac castle**(1-4)
- The **Saint-Nazaire**(1) shipyard, embodiment of French pride
- The **wine route of the Muscadet**(1) through the vineyards of the Nantes region
- **Cruise on board a paddle steamer**

CRUISE PROGRAM (6 DAYS / 5 NIGHTS)



Day 1 : NANTES - SAINT-NAZAIRE

Passengers are welcome to board our ship at 6:00 p.m. After comfortably settling into your cabins, we'll introduce our crew at a welcome cocktail before dinner. The ship will sail towards Saint-Nazaire.



Day 2 : SAINT-NAZAIRE - NANTES

This morning, join us for the **optional excursions for both package**: tour of Saint Nazaire, a town on the sea. We'll visit Escal'Atlantic, a museum that explores the historic ocean liner experience, and the Saint-Nazaire shipyard, one of the largest shipyards in Europe (This excursion must be booked in advance through your travel agency. Each passenger will be asked to produce a valid passport in order to book the excursion and gain access to the shipyard).

In the evening, join us on an **optional excursion for both packages**: we'll board a local boat for a cruise on the Erdre River, one of the most beautiful in France.



Day 3 : NANTES - ANCENIS

This morning, join us for the **optional excursions proposed** :

CLASSIC : Guided tour of Nantes and the Castle of the Dukes of Brittany.

DISCOVERY: Nantes, the Machines de l'Île(3), secret courtyards and covered passageways.

This afternoon, join us for the **optional excursions proposed** :

CLASSIC : The Muscadet Wine Route and Clisson, a charming medieval town.

DISCOVERY: Helicopter ride(2), the Loire from above (this excursion must be booked in advance through your travel agency).



Day 4 : ANCENIS - CHALONNES-SUR-LOIRE - Angers(1)

We'll cruise towards Chalonnes-sur-Loire. Join us for the **optional excursions proposed**:

CLASSIC: Guided tour of Angers, its historic districts and the famous Apocalypse tapestry(5).

DISCOVERY: Tour of Brissac castle(4) and its cellars complete with a wine-tasting session.

Enjoy an evening of entertainment.



Day 5 : CHALONNES-SUR-LOIRE - The Châteaux of the Loire Valley - ANCENIS

Join us on a full-day included excursion for both packages to discover the Castles of the Loire Valley. We'll return on board in Ancenis. Tonight's our gala dinner and evening. Our ship will start sailing towards Nantes.



Day 6 : NANTES

Enjoy one last buffet breakfast before disembarking at 10:00 a.m. End of our services.

This offer includes

Your cruise with all meals from dinner the first evening to breakfast on the final day - onboard drinks included (except for drinks from our special lists) - double-occupancy cabin with shower in bathroom - assistance from our onboard multi-lingual host/hostess - welcome cocktail - gala dinner - onboard entertainment - travel assistance and repatriation insurance - all port fees.

This offer does not include

Drinks from our special lists, or drinks ordered during excursions or transfers - optional excursions (must be reserved and paid for on board or at travel agency) - cancellation and baggage insurance - transfers/travel to and from departure/arrival points - personal expenses.

Transport

Port-to-port cruise without transfers

Requirements

Valid passport required. Non-EU nationals are advised to consult their embassy or consulate.

THE CROISIEUROPE DIFFERENCE

- **All meals included - DRINKS INCLUDED** with meals and at the bar
- Refined French cuisine - **Gala dinner and evening** - Welcome cocktail
- **Free Wi-Fi** onboard
- Headsets are included for excursions
- Official welcome from the captain and crew
- Onboard activities
- Travel assistance and repatriation insurance
- All port fees included

MENTIONS

The cruise schedule may vary according to tides and arrival times at ports of call may be subject to change. For the safety of our passengers, the captain and crew of the boat may decide to modify the navigational itinerary.

- (1) Optional excursions.
- (2) Subject to availability and favorable weather conditions.
- (3) The Machines de l'Île are closed on Mondays, it will be replaced by the classic excursion.
- (4) The Brissac castle is closed on Tuesdays, it will be replaced by the Serrant Castle.
- (5) Site closed on January 1st, May 1st, November 1st and 11th, and December 25th.

Alcohol can be harmful to your health. Please drink in moderation.

EXCURSIONS

Day 0 3 Excursion (s)



CLASSIC EXCURSIONS PACKAGE *(Optional)*

Classic



* Subject to designated service validity for the concerned departure



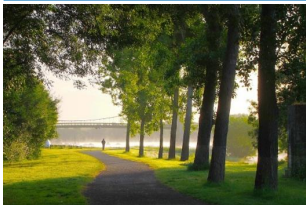
(Optional)



(Optional)



Day 2 2 Excursion (s)

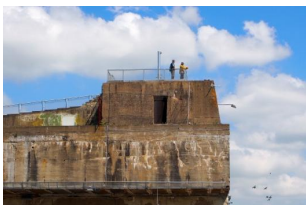


Tourist cruise on the Erdre River *(Optional)*

Classic



Evening



Guided tour of Saint Nazaire *(Optional)*

Classic



Morning

Day 3 4 Excursion (s)



Helicopter ride: the Loire from above *(Optional)*

Discovery



Afternoon



The Muscadet Region *(Optional)*

Classic



Afternoon



Nantes: the machines de l'île, secret courtyards and covered passageways *(Optional)*

Discovery



Morning



Guided tour of Nantes *(Optional)*

Duration : 04h30

Classic



Morning

Day 4 2 Excursion (s)



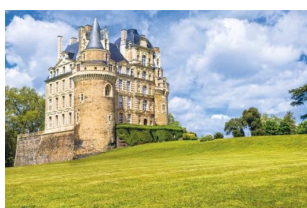
Guided tour of Angers *(Optional)*

Duration : 04h00

Classic



Afternoon



Chateau de Brissac *(Optional)*

Duration : 04h00

Discovery



Afternoon

Day 5 1 Excursion (s)



The Loire Valley Châteaux *(Included)*

Duration : 11h00

Classic



Day